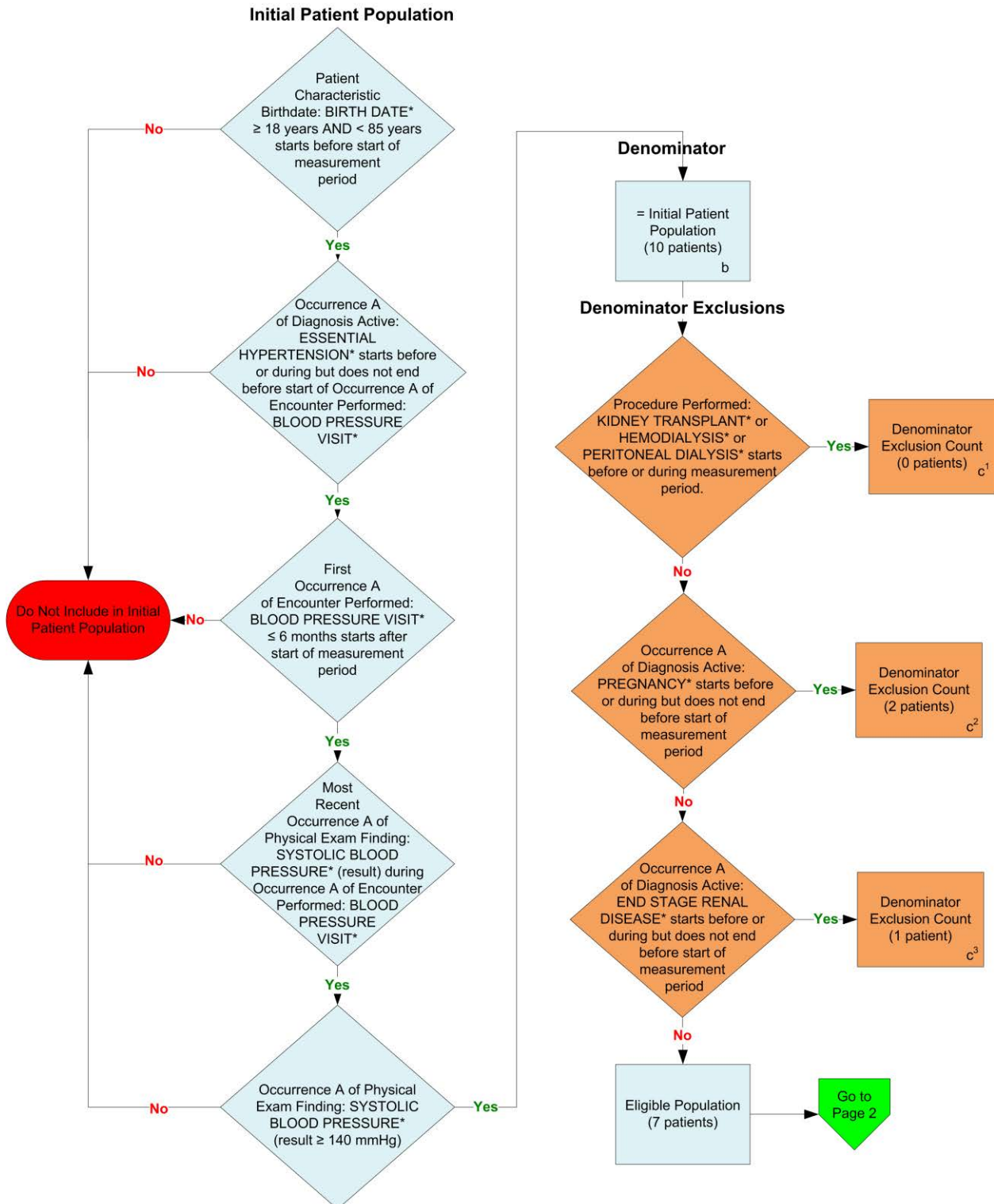
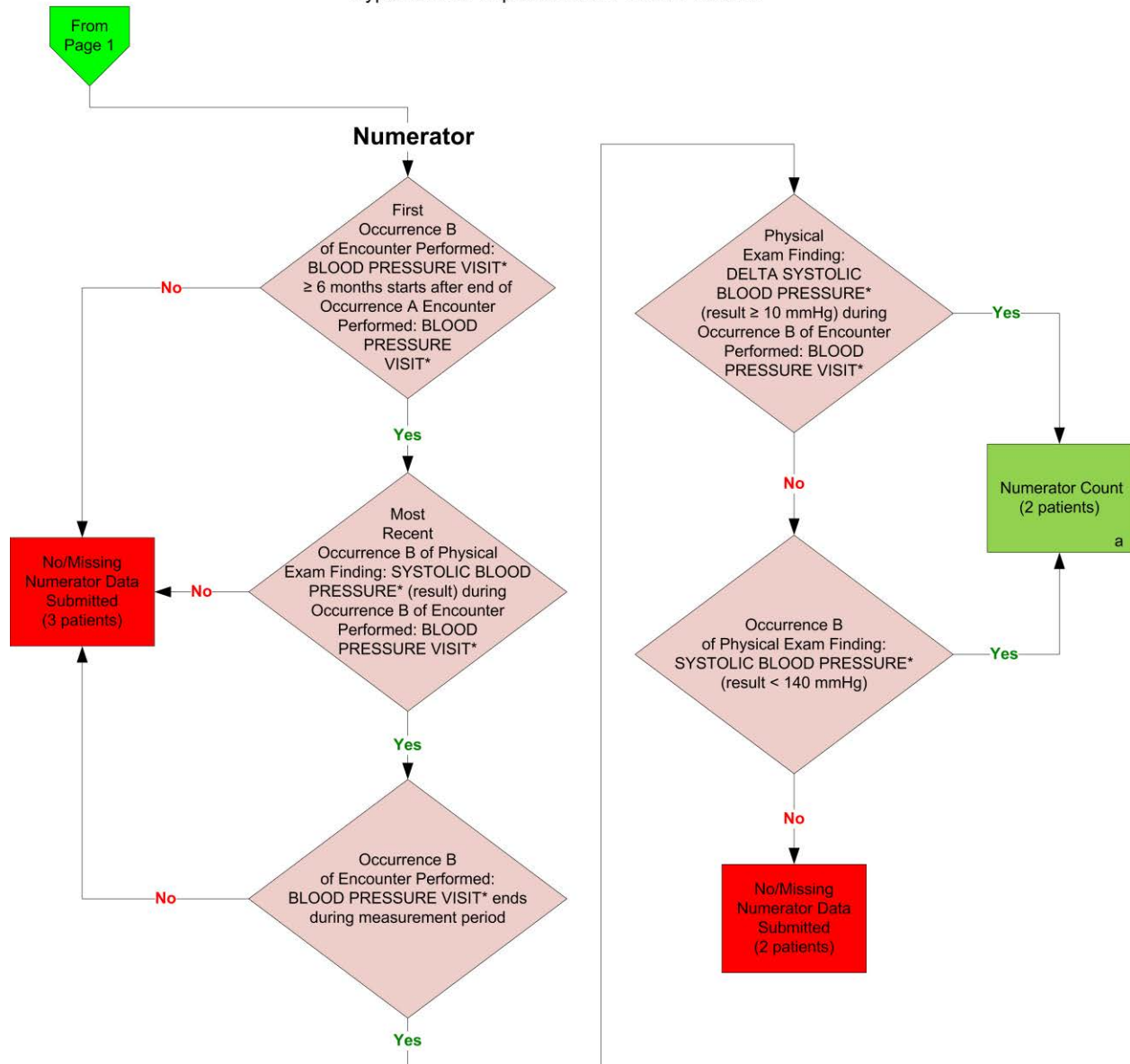


2014 eCQM Flow
Measure Identifier: CMS65v4
Hypertension: Improvement in Blood Pressure



*Please refer to the specific section of the eCQM to identify the QDM data elements and associated value sets for use in reporting this eCQM.

2014 eCQM Flow
Measure Identifier: CMS65v4
Hypertension: Improvement in Blood Pressure



*Please refer to the specific section of the eCQM to identify the QDM data elements and associated value sets for use in reporting this eCQM.

SAMPLE CALCULATION:

Performance Rate =

$$\frac{\text{Numerator (a = 2 patients)}}{\text{Denominator (b = 10 patients) - Denominator Exclusions (c}^1 + \text{c}^2 + \text{c}^3 = 3 \text{ patients) - Denominator Exceptions (N/A)}} = 28.57\%$$

2014 eCQM Flows
Measure Identifier: CMS65v4
Hypertension: Improvement in Blood Pressure

Please refer to the specific section of the eCQM to identify the QDM data elements and associated value sets for use in reporting this eCQM.

1. Start Initial Patient Population
2. Check Patient Characteristic Birth date:
 - a. If the QDM data element, BIRTH DATE, greater than or equal to 18 years and less than 85 years of age, starts before start of measurement period equals No, do not include in Initial Patient Population. Stop Processing.
 - b. If the QDM data element, BIRTH DATE, greater than or equal to 18 years and less than 85 years of age, starts before start of measurement period equals Yes, proceed to check Diagnosis Active.
3. Check Diagnosis Active:
 - a. If Occurrence A of the QDM data element, HYPERTENSION, starts before or during but does not end before start of Occurrence A of Encounter Performed QDM data element, BLOOD PRESSURE VISIT, equals No, do not include in the Initial Patient Population. Stop Processing.
 - b. If the QDM data element, HYPERTENSION, starts before or during Occurrence A of Encounter Performed the QDM data element, BLOOD PRESSURE VISIT, equals Yes, proceed to check Encounter Performed.
4. Check Encounter Performed:
 - a. If First Occurrence A of the QDM data element, BLOOD PRESSURE VISIT, less than or equal to 6 months, starts after start of measurement period equals No, do not include in the Initial Patient Population. Stop Processing.
 - b. If First Occurrence A of the QDM data element, BLOOD PRESSURE VISIT, less than or equal to 6 months, starts after start of measurement period equals Yes, proceed to check Physical Exam Finding.
5. Check Physical Exam Finding:
 - a. If Most Recent Occurrence A of the QDM data element, SYSTOLIC BLOOD PRESSURE (result), during Occurrence A of Encounter Performed of the QDM data element, BLOOD PRESSURE VISIT, equals No, do not include in the Initial Patient Population. Stop Processing.
 - b. If Most Recent Occurrence A of the QDM data element, SYSTOLIC BLOOD PRESSURE (result), during Occurrence A of Encounter Performed the QDM data element, BLOOD PRESSURE VISIT, equals Yes, proceed to check Physical Exam Finding. Check Physical Exam Finding:
 - c. If Occurrence A of the QDM data element, SYSTOLIC BLOOD PRESSURE (result greater than or equal to 140 mmHg), equals No, do not include in the Initial Patient Population. Stop Processing.
 - d. If Occurrence A of the QDM data element, SYSTOLIC BLOOD PRESSURE (result greater than or equal to 140 mmHg), equals Yes, proceed to Denominator.

6. Start Denominator
 - a. Denominator equals the Initial Patient Population. Denominator is represented by letter B in the sample calculation listed at the end of this document. Letter B equals 10 patients in the sample calculation.
7. Start Denominator Exclusions
8. Check Procedure Performed:
 - a. If the QDM data element, KIDNEY TRANSPLANT, or the QDM data element, HEMODIALYSIS, or the QDM data element, PERITONEAL DIALYSIS, starts before or during measurement period equals No, do not include in the Denominator Exclusion Count and proceed to check Diagnosis Active.
 - b. If the QDM data element, KIDNEY TRANSPLANT, or the QDM data element, HEMODIALYSIS, or the QDM data element, PERITONEAL DIALYSIS, starts before or during measurement period equals Yes, include in the Denominator Exclusion Count which is represented by letter C in the sample calculation listed at the end of this document. Letter C¹ equals 0 patients in the sample calculation. Stop Processing.
9. Check Diagnosis Active:
 - a. If Occurrence A of the QDM data element, PREGNANCY, starts before or during but does not end before start of measurement period equals No, do not include in the Denominator Exclusion Count and proceed check next Diagnosis Active.
 - b. If Occurrence A of the the QDM data element, PREGNANCY, starts before or during but does not end before start of measurement period equals Yes, include in the Denominator Exclusion Count which is represented by letter C in the sample calculation listed at the end of this document. Letter C² equals 2 patients in the sample calculation. Stop Processing.
10. Check Diagnosis Active
 - a. If Occurrence A of the QDM data element, END STAGE RENAL DISEASE, starts before or during but does not end before start of measurement period equals No, do not include in the Denominator Exclusion Count and proceed to Start Numerator.
 - b. If the QDM data element, END STAGE RENAL DISEASE, starts before or during but does not end before start of measurement period equals Yes, include in the Denominator Exclusion Count which is represented by letter C in the sample calculation listed at the end of this document. Letter C³ equals 1 patient in the sample calculation. Stop Processing.
11. Start Numerator
12. Check Encounter Performed:
 - a. If First Occurrence B of the QDM data element, BLOOD PRESSURE VISIT, greater than or equal to 6 months, starts after end of Occurrence A of the QDM data element, BLOOD PRESSURE VISIT, equals No, include in the No/Missing Data Submitted count. Stop Processing.
 - b. If First Occurrence B of the QDM data element, BLOOD PRESSURE VISIT, greater than or equal to 6 months, starts after end of Occurrence A of the QDM

data element, BLOOD PRESSURE VISIT, equals Yes, proceed to check Physical Exam Finding.

13. Physical Exam Finding:
 - a. If Most Recent Occurrence B of the QDM data element, SYSTOLIC BLOOD PRESSURE (result), during Occurrence B of Encounter Performed of the QDM data element, BLOOD PRESSURE VISIT, equals No, include in the No/Missing Data Submitted count. Stop Processing.
 - b. If Most Recent Occurrence B of the QDM data element, SYSTOLIC BLOOD PRESSURE (result), during Occurrence B of Encounter Performed of the QDM data element, BLOOD PRESSURE VISIT, equals Yes, proceed to check Encounter Performed.
14. Check Encounter Performed:
 - a. If Occurrence B of the QDM data element, BLOOD PRESSURE VISIT, ends during the measurement period, equals No, include in the No/Missing Data Submitted count. Stop Processing.
 - b. If Occurrence B of the QDM data element, BLOOD PRESSURE VISIT, ends during the measurement period, equals Yes, proceed to check Physical Exam Finding.
15. Physical Exam Finding:
 - a. If the QDM data element, DELTA SYSTOLIC BLOOD PRESSURE (result greater than or equal to 10 mmHg), during Occurrence B of Encounter Performed of the QDM data element, BLOOD PRESSURE VISIT, equals No, proceed to check next Physical Exam Finding.
 - b. If the QDM data element, DELTA SYSTOLIC BLOOD PRESSURE (result greater than or equal to 10 mmHg), during Occurrence B of Encounter Performed of the QDM data element, BLOOD PRESSURE VISIT, equals Yes, include in the Numerator Count which is represented by letter A in the sample calculation listed at the end of this document. Letter A equals 2 patients in the sample calculation. Stop Processing.
16. Physical Exam Finding:
 - a. If Occurrence B of the QDM data element, SYSTOLIC BLOOD PRESSURE (result less than 140 mmHg), equals No, include in the No/Missing Data Submitted count. Stop Processing.
 - b. Occurrence B of the QDM data element, SYSTOLIC BLOOD PRESSURE (result less than 140 mmHg), equals Yes, include in the Numerator Count which is represented by letter A in the sample calculation listed at the end of this document. Letter A equals 2 patients in the sample calculation. Stop Processing.

SAMPLE CALCULATIONS

Performance Rate =

Numerator (a=2 patients)

÷

Denominator (b=10 patients) – Denominator Exclusions ($c^1+c^2+c^3=3$ patients) – *Denominator Exceptions (N/A)*
= 28.57%